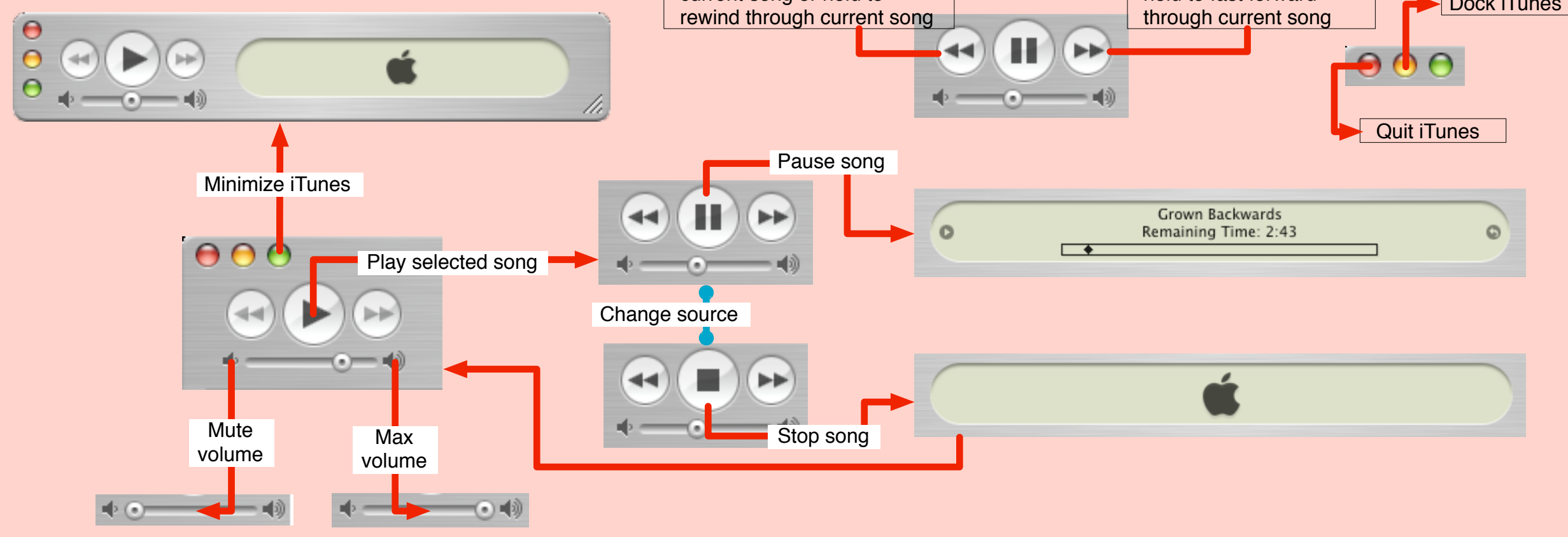


iTunes Generalized Transition Network (GTN) Diagram

SI 622 - Winter 2005

Dino Anastasia, Cara D'Amato, & Emily Tennant

8. Player & window actions

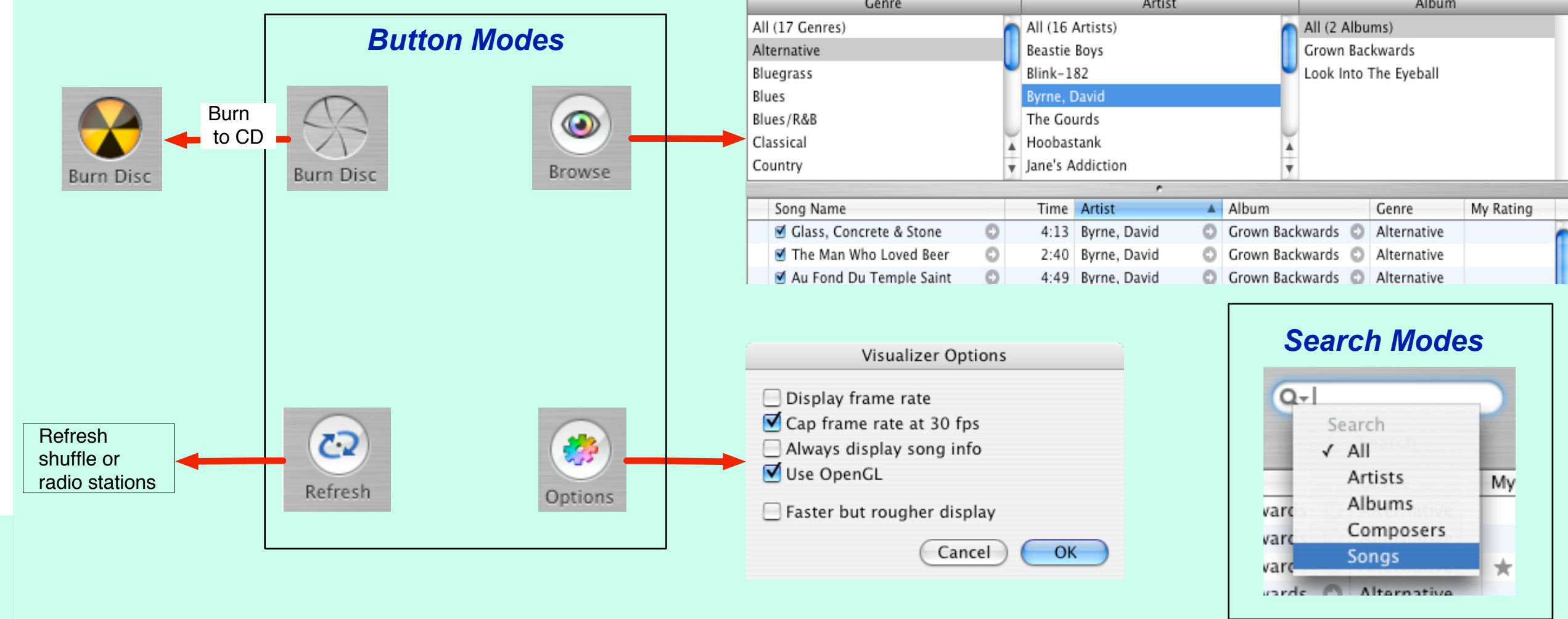


Notes:

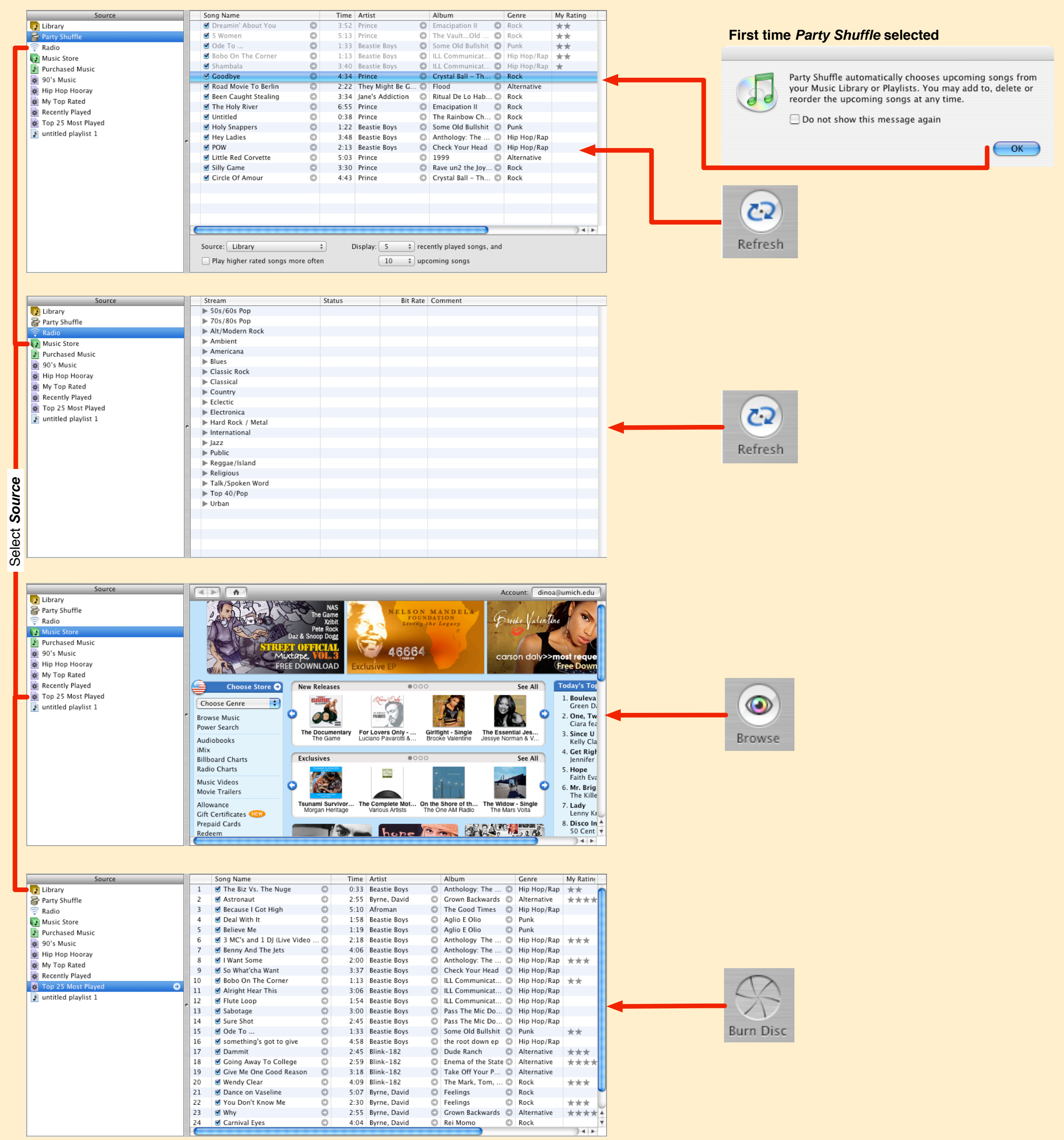
- + Window actions such as resizing, closing, minimizing are not noted in this diagram.
- + Menu options are not illustrated.
- + Only the parent level options are illustrated.
- + Navigation can also be accomplished by use of the arrow keys on the keyboard.

Single Click
Double Click
Keyboard

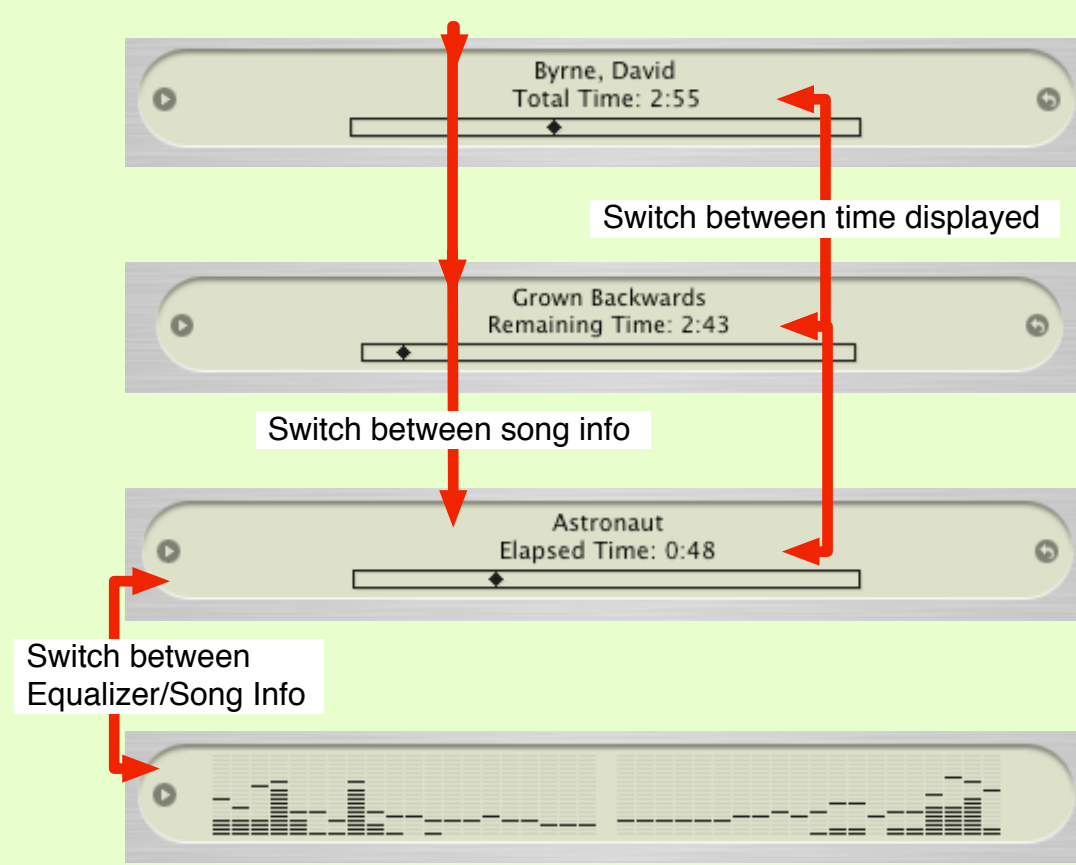
2. Browse/Search actions



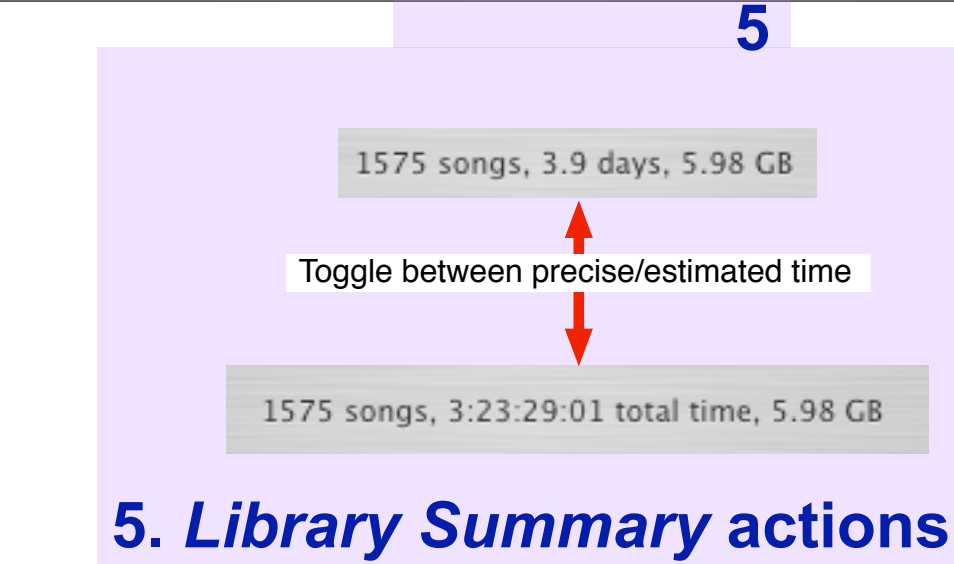
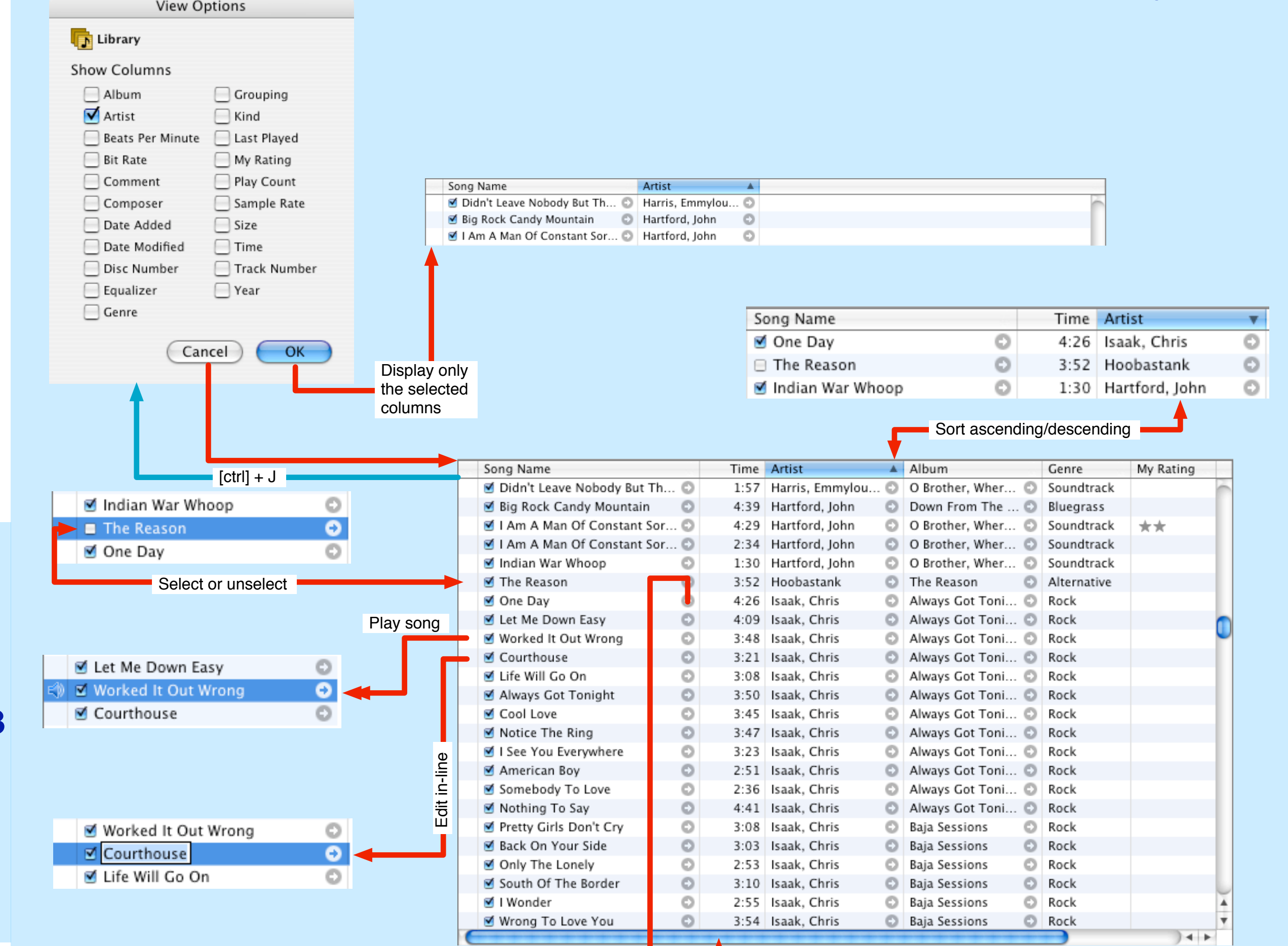
7. Source actions



1. Display actions

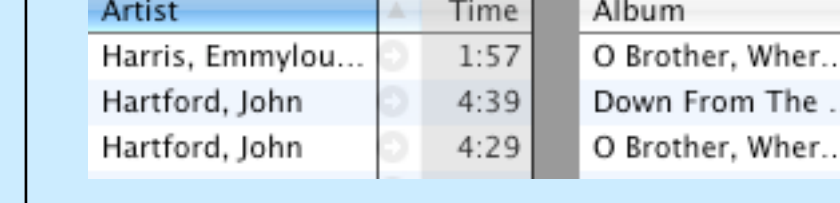


3. Music Library actions

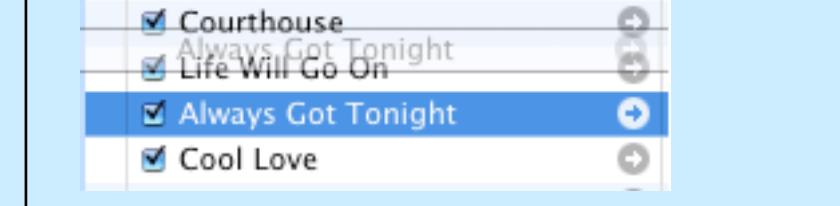


Rearranging Library elements

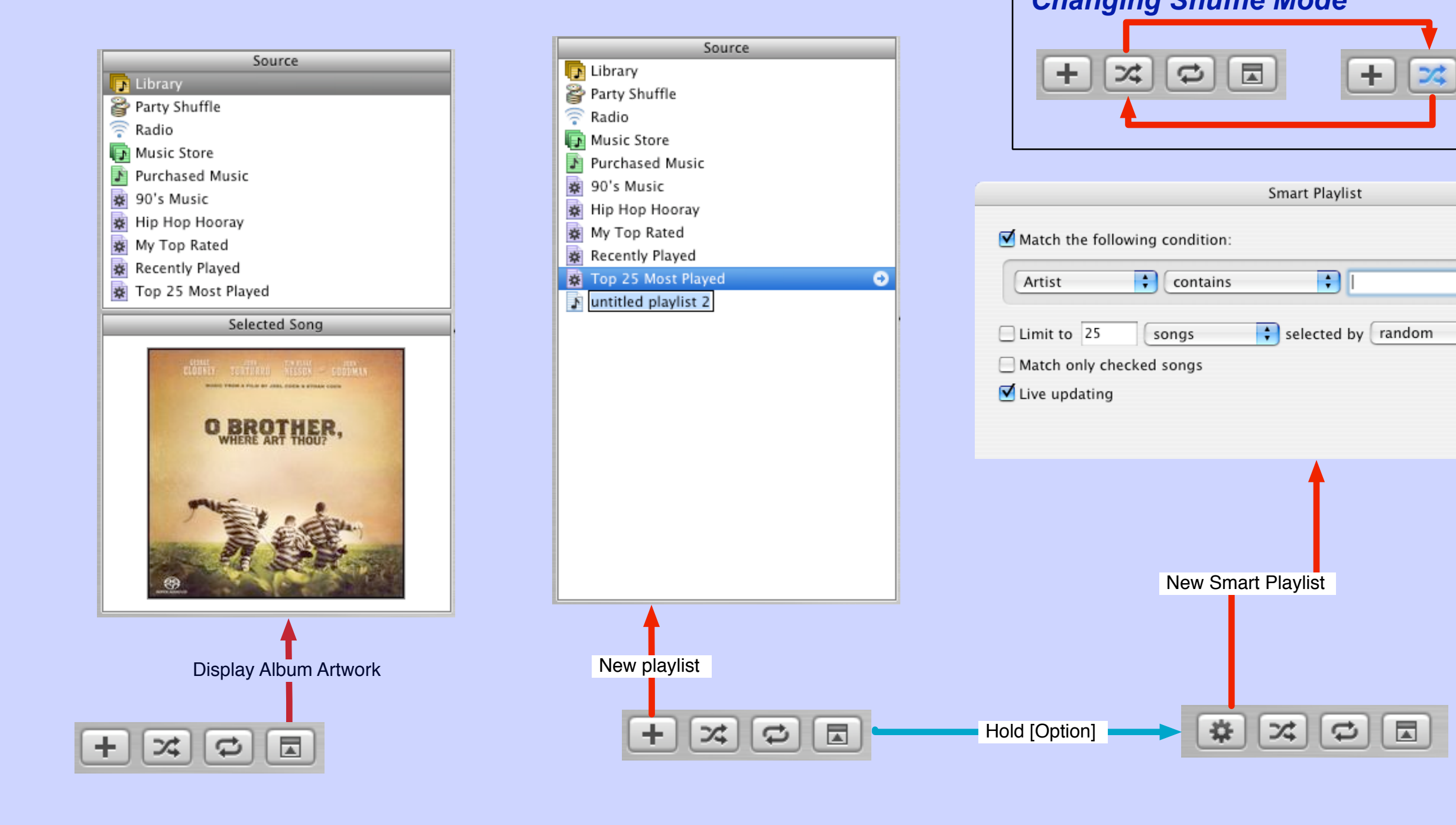
Click + drag column heading to reorder columns



Click + drag song to reorder songs



6. Source Button actions



4. Lower Button actions

